



Risk-Ready for HCC Model V28 with Persivia's Risk Adjustment Solution

Introduction

The risk adjustment landscape is undergoing changes, with ongoing regulatory modifications presenting challenges for healthcare organizations. The transition from HCC Model V24 to V28 requires providers to adapt quickly to new coding and documentation requirements. This shift demands enhanced accuracy in capturing patient risk profiles, necessitating sophisticated tools to maintain compliance and optimize documentation, excellent care and appropriate reimbursements.

 978-856-4600

 info@persivia.com

 www.persivia.com

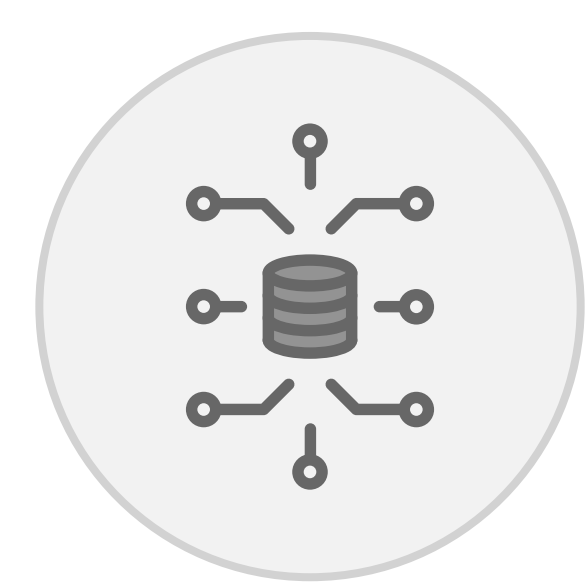
Future-Ready Risk Adjustment Solution: Anticipate, Adapt, Excel

The healthcare industry's constant change requires solutions that can swiftly adapt to new regulations and HCC models. Persivia's risk adjustment platform is designed with this flexibility, enabling organizations to pivot and align with new CMS or HCC regulations quickly. Our future-ready approach empowers healthcare providers and payers to stay ahead of regulatory changes, maintaining compliance while optimizing performance. By continuously updating our AI models and data processing algorithms, we ensure our clients are always prepared for the next shift in the risk adjustment landscape.

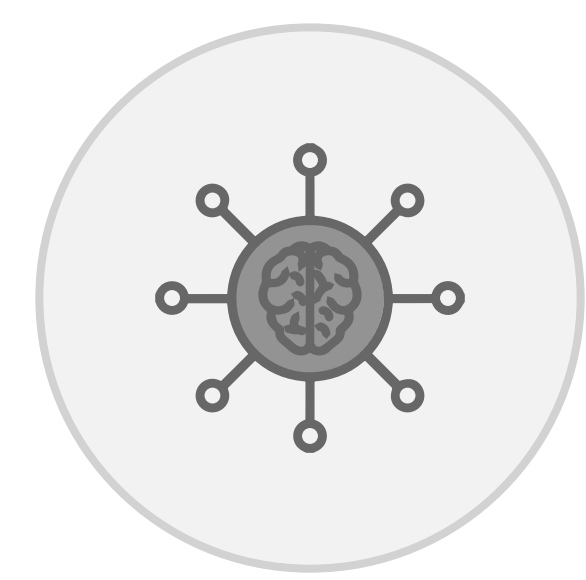
Preparing for HCC Model V28 with Persivia's Risk Adjustment Solution

As healthcare organizations face the transition to HCC Model V28, Persivia's advanced risk adjustment solution provides the necessary tools and capabilities to stay ahead. Our platform helps providers capture a more accurate and comprehensive patient picture, which is crucial for success under the new model's requirements.

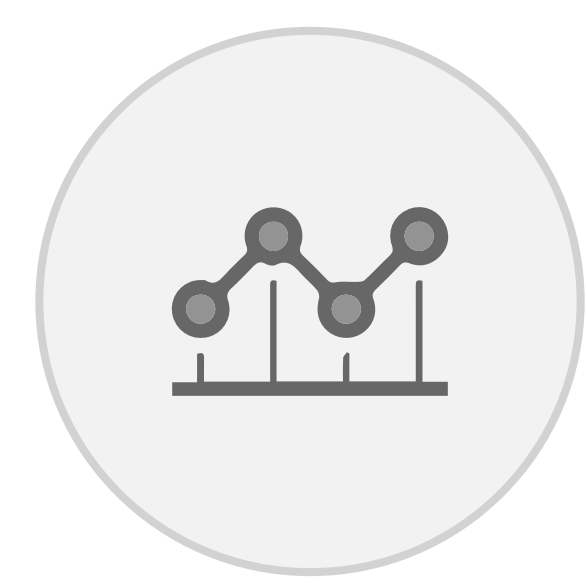
Key Benefits for V28 Readiness



Our solution ensures thorough documentation of patient conditions, aligning with V28's emphasis on an accurate patient picture.



The AI-driven system helps organizations map existing data to new V28 codes and categories, minimizing disruption during the transition.



By capturing more accurate patient data, organizations can increase risk adjustment factor (RAF) scores, improving benchmarks.



The system identifies potential gaps in documentation or coding that may impact V28 performance, allowing for timely interventions.

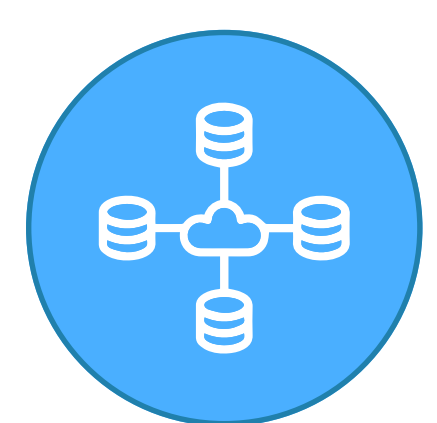
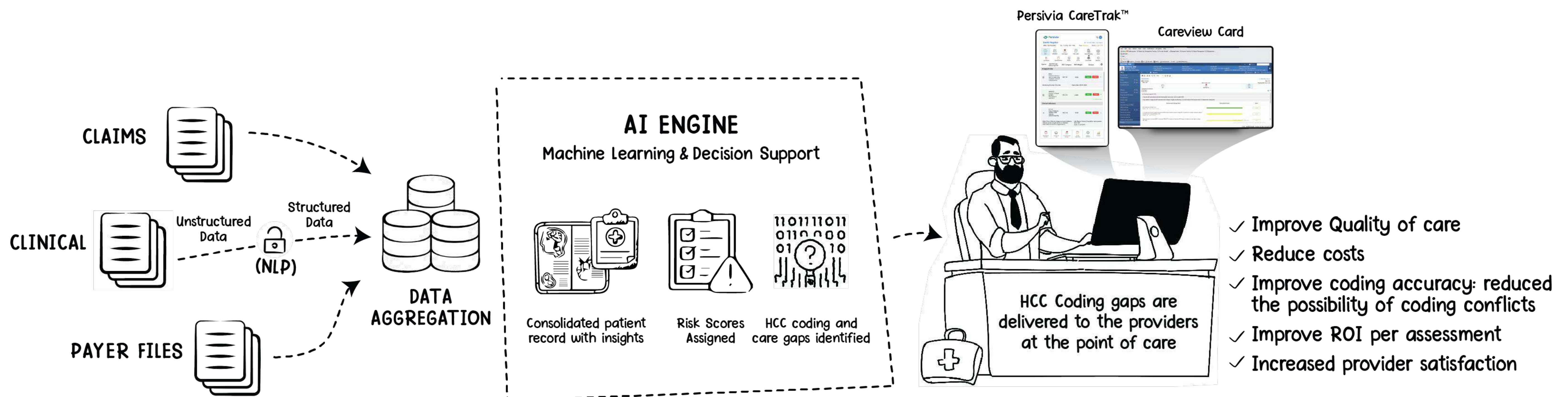
With Persivia's risk adjustment solution, healthcare organizations can confidently navigate the transition to HCC Model V28, ensuring compliance and optimization for success in this evolving landscape.

Persivia CareSpace®

Persivia CareSpace® delivers an end-to-end AI-driven risk adjustment solution powered by advanced Natural Language Processing (NLP) and Machine Learning (ML) technologies. This comprehensive platform supports various healthcare models, including ACA, Medicare Advantage, Medicaid ACOs, and ACO REACH, while accommodating multiple risk adjustment frameworks such as HHS-HCC, CMS-HCC, and CDPS and all custom models. CareSpace® aggregates data from all structured and unstructured sources to build a unified longitudinal patient record. Sophisticated AI models process this dataset to identify potential HCC codes, flag documentation gaps, and deliver actionable insights at the point of care. By streamlining workflows and creating comprehensive patient risk profiles, Persivia's solution revolutionizes how providers identify risk factors, optimize reimbursements, and enhance the quality of care.

The Persivia Advantage: Capabilities and Power of Our Risk Adjustment Solution

Persivia's risk adjustment solution, CareSpace®, offers a comprehensive suite of capabilities designed to help healthcare organizations stay ahead of their competitors in the risk adjustment space.



Data Aggregation and Management

CareSpace® gathers patient data from hundreds of disparate sources such as EMRs, HIEs, Health Risk Assessment (HRAs), Labs, EHR claims data, SDOH, HL7 data, pharmacies, hospitals, payers, RAPS and EDS data, patient reported, consumer, and diagnostic device data in different file formats to build a longitudinal patient record. We also provide data continuity and monitoring dashboards, to ensure high quality data.

Our clinical data extraction solution leverages our AI engine to define, focus and retrieve targeted information from digital records, providing more comprehensive results to support quality measurement and reporting initiatives, risk score accuracy and highly differentiated clinical programs.

CareSpace® maintains accurate medical data using Persivia's proprietary Master Patient Index (eMPI). It uses three levels of identification to reliably match the data to the appropriate patient's longitudinal record.



Data Enrichment

CareSpace® employs advanced NLP to extract HCC codes from structured and unstructured patient data, creating comprehensive longitudinal patient records. These enriched patient records power AI-driven analytics, generating actionable insights and pinpointing care gaps. This process enhances risk adjustment accuracy, uncovering hidden risk factors and opportunities for early intervention.

Persivia's NLP and clinical inferences through ML help identify opportunities and suspected conditions for RAF score predictions while simultaneously documenting MEAT (Monitor, Evaluate, Assess, Treat) criteria in the EHR. This approach helps reduce care gaps caused by insufficient provider documentation, ensuring more accurate risk profiles and improved care management.



Risk Stratification

The true power of CareSpace® excels in its sophisticated AI-powered risk stratification capabilities. CareSpace leverages Soliton AI to provide multiple, automated and risk stratification models to identify high risk patient. Our platform offers multiple automated risk stratification models, providing a comprehensive view of patient risk.



Persivia's AI-Powered Health Risk Assessments

Persivia provides advanced Health Risk Assessments (HRAs) that integrate seamlessly with EHRs, enabling healthcare providers to efficiently collect and analyze patient data. Our AI-driven platform combines comprehensive health questionnaires, intelligent gap analysis, and streamlined workflows to enhance clinical decision-making and improve patient outcomes.

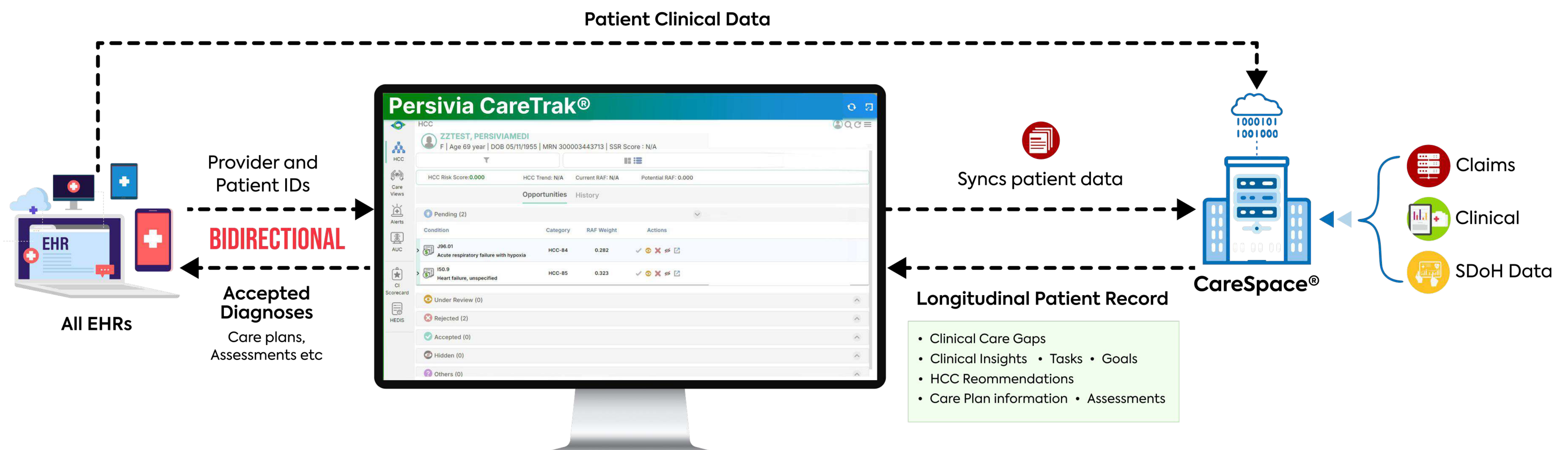
Key Features:

- Customizable HRA tools covering physical, mental, social, and preventive health aspects
- AI-powered identification and display of open quality gaps
- Integrated lab ordering and results management
- Seamless integration with wellness programs
- Automated and secure HRA reporting
- Provider and biller dashboards for unified workflow management

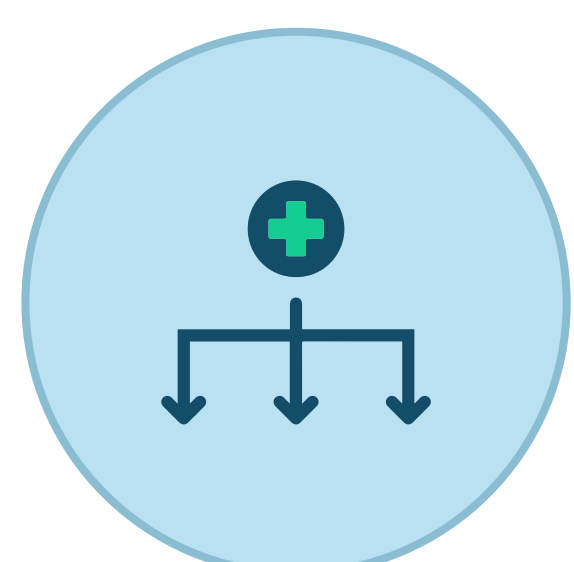
Persivia's HRAs empower healthcare providers to efficiently identify health risks, close care gaps, and deliver personalized interventions, all within a single, intuitive platform.

CareTrak® : The Future Lies at the Point-of-Care

CareTrak®, the cornerstone of Persivia's risk adjustment solution, is an innovative EHR-agnostic application transforming point-of-care decision-making. This powerful tool seamlessly integrates with existing electronic health record systems (EHRs), directly bringing critical risk adjustment insights to physicians' fingertips.



Critical features of CareTrak® include:



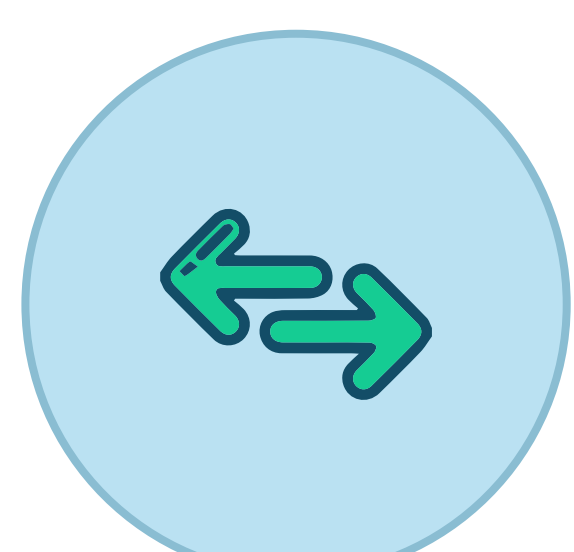
Effortless EHR Integration

CareTrak® automatically synchronizes with the provider's EHR, eliminating the need for multiple logins and streamlining clinical workflows.



Comprehensive Patient Insights

Providers gain instant access to AI-driven risk profiles, care gaps, and HCC coding opportunities, all within their existing EHR interface.



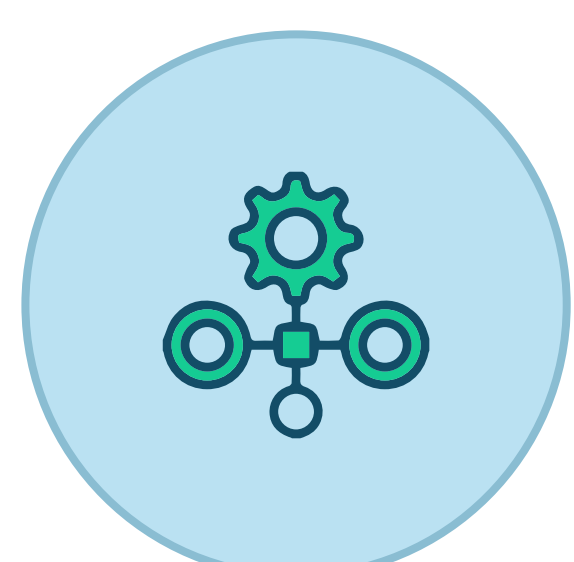
Bidirectional Connectivity

The platform facilitates seamless, real-time data exchange between payers and providers, fostering collaboration and enhancing risk adjustment accuracy.



Workflow Optimization

By integrating risk adjustment processes into the clinical workflow, CareTrak improves efficiency and reduces administrative burden.



Integrated CDI Workflows

CareTrak® seamlessly incorporates clinical documentation improvement (CDI) workflows, offering real-time guidance and suggestions to clinicians at the point of care. This ensures accurate and comprehensive documentation to support appropriate HCC coding.

By bringing advanced risk adjustment capabilities directly into the clinical setting, CareTrak® revolutionizes how healthcare providers interact with patient data, make informed decisions, and ensure accurate risk capture. This point-of-care solution represents the future of risk adjustment, enabling providers to deliver higher quality, more precisely coded care while optimizing reimbursements and improving documentation accuracy.

CareTrak® - HCC Module

CareTrak's HCC module is designed to enhance healthcare organizations' ability to optimize their risk adjustment processes. By leveraging the power of AI and real-time data analysis, CareTrak® empowers providers to:



Identify HCC opportunities during patient encounters.



Access supporting documentation and clinical evidence.



Make informed decisions about HCC code acceptance or rejection.



Automatically update the EHR with approved HCC codes.

This seamless integration of risk adjustment into the clinical workflow improves coding accuracy and enhances the overall quality of patient care. Providers can address potential gaps in documentation and ensure that each patient's risk profile is accurately represented.

Proven Results

Achieve an HCC Risk Adjustment Pass Rate of 100%	Reduce provider workloads by up to 50%	Achieve upto 99% HCC coding Accuracy	Automate chart review with AI-powered NLP
	120% HCC Capture Improved	98% Accuracy in extracting HCC codes from physician notes through NLP	100% RAF Scores



Testimonial / Happy Client

Persivia's Automated Health Risk Assessment Process solution has transformed our patient care and documentation approach. It improved coding accuracy and HCC codes, helped close the HEDIS-based care gaps, and improved the patient experience, allowing the provider to do the telehealth visit and the assessment on the same screen. So, they could be more efficient and focused on the patient care and documenting the code, documenting the visit appropriately.

Steve Thompson
CIO of Harmony Cares.

How Persivia Can Help with Its Risk Adjustment Solution

As the healthcare landscape continues to evolve, with regulatory changes and the shift towards value-based care, healthcare organizations need robust, adaptable solutions to navigate the complexities of risk adjustment. Persivia's comprehensive, AI-driven risk adjustment solutions are designed to streamline processes, improve accuracy, and optimize reimbursements.

Persivia's CareSpace® platform, powered by advanced Natural Language Processing (NLP) and Machine Learning (ML) technologies, is the cornerstone of this solution. It aggregates data from hundreds of disparate sources to create a unified longitudinal patient record, enabling precise risk stratification and proactive gap identification. The CareTrak application brings these insights directly to the point of care, revolutionizing clinical decision-making and documentation accuracy. With its ability to seamlessly integrate with existing EHR systems, AI-powered Health Risk Assessments, and comprehensive HCC module, Persivia's solution empowers healthcare providers to thrive in the new era of value-based care. By choosing Persivia, healthcare organizations gain a powerful ally in their quest to improve patient outcomes, optimize reimbursements, and stay ahead of regulatory changes, ensuring they are well-equipped to face the challenges of modern healthcare delivery.

